

Worldwide Pollution Control Association

WPCA-Southern Company
Wastewater Treatment
Seminar

April 16 & 17, 2013

All presentations posted on this website are copyrighted by the Worldwide Pollution Control Association (WPCA). Any unauthorized downloading, attempts to modify or to incorporate into other presentations, link to other websites, or to obtain copies for any other purposes than the training of attendees to WPCA Conferences is expressly prohibited, unless approved in writing by the WPCA or the original presenter. The WPCA does not assume any liability for the accuracy or contents of any materials contained in this library which were presented and/or created by persons who were not employees of the WPCA.



Visit our website at www.wpca.info



Landfill and Ash Pond Issues

WPCA Waste Water Treatment Seminar

April 16-17, 2013

Atlanta, Georgia

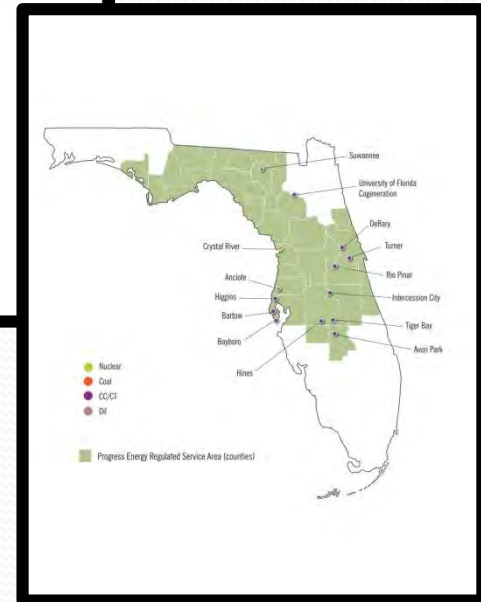
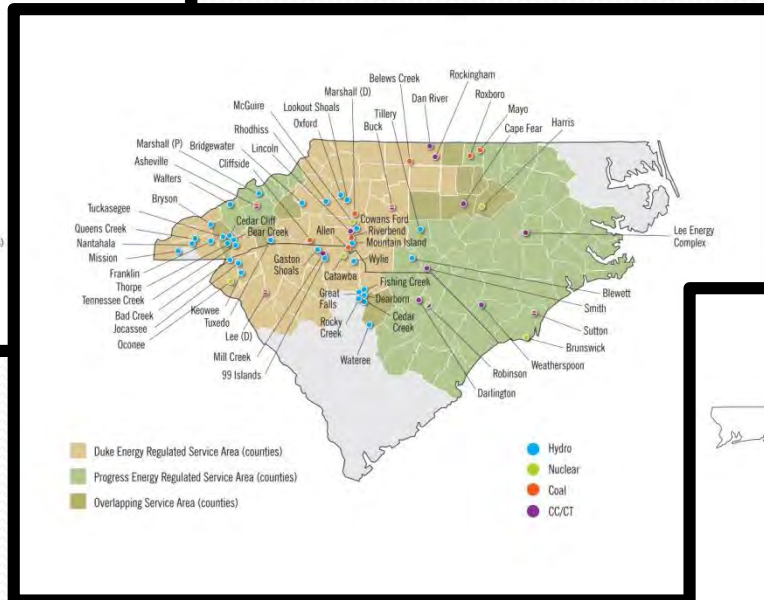
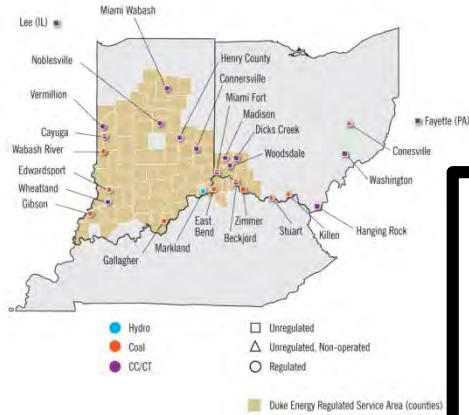
Bill Kennedy, P.E.
Strategic Engineering
Water Programs

William.Kennedy@Duke-Energy.com



U.S. FRANCHISED ELECTRIC AND GAS

- 6 states: North Carolina, South Carolina, Indiana, Ohio, Kentucky, Florida
- 104,000 square miles of service area

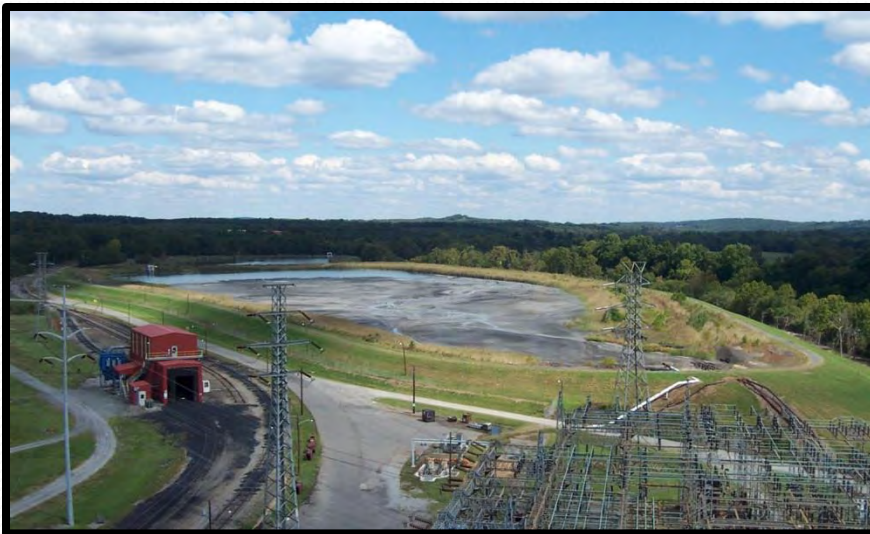


- 58,200 MW of U.S. generating capacity



ASH BASIN SUMMARY

- 22 Coal-fired plants
 - 9 Coal-fired plants scheduled for closure
- 61 Ash basins
 - 22 Ash basins scheduled for closure



CONSIDERATIONS

- Local/State regulations (environmental, dam safety)
- Type of ash facility (ash basin or ash storage area)
- Legacy environmental impacts
- Future land/property uses
- Cost effectiveness
- Site-specific closure options/limitations



CLOSURE OPTIONS

- Clean Closure
- Closure in Place
- Hybrid Closure



WHERE WE ARE

- Strategic planning and budgeting started in 2010 looking at multiple regulatory pathways.
- Annual review of options as information is updated.
- Water issues:
 - Steam Electric Effluent Guidelines
 - NPDES Permits
 - Dam Safety
 - High Yield Aquifers
 - Storm Water Management
 - Waste Water Management
- Waste and Air issues:
 - CCR Regulations
 - Cover Systems
 - Ground Water Monitoring
 - Fugitive Dust/Title V Permits

SELECTION OF POND CLOSURE DESIGN

